

**LEGEND:**

	Sign Location		Detractor
	Close One Barricade		Traffic Control Person
	Closure Area		
	Access Route		
	Egress Route		



**REVISIONS:**

DATE	DETAILS

**NOTES:**

1. Dates: TBD
2. Hours of Operation: TBD
3. Duration: TBD
4. Traffic Plan based on a 50 km/h speed zone
5. TCPs to assist pedestrians and cyclists as required
6. Traffic specifications based on the MOT manual for work on Roadways (1999)

MUNICIPAL PROJECT NO.  
 MUNICIPAL CONTACT:  
 QRSITE CONTACT:  
 DOWE SYMBOL:  
 BUS STOP(S) TO BE REMOVED:  
 PARKING METERS TO BE REMOVED:

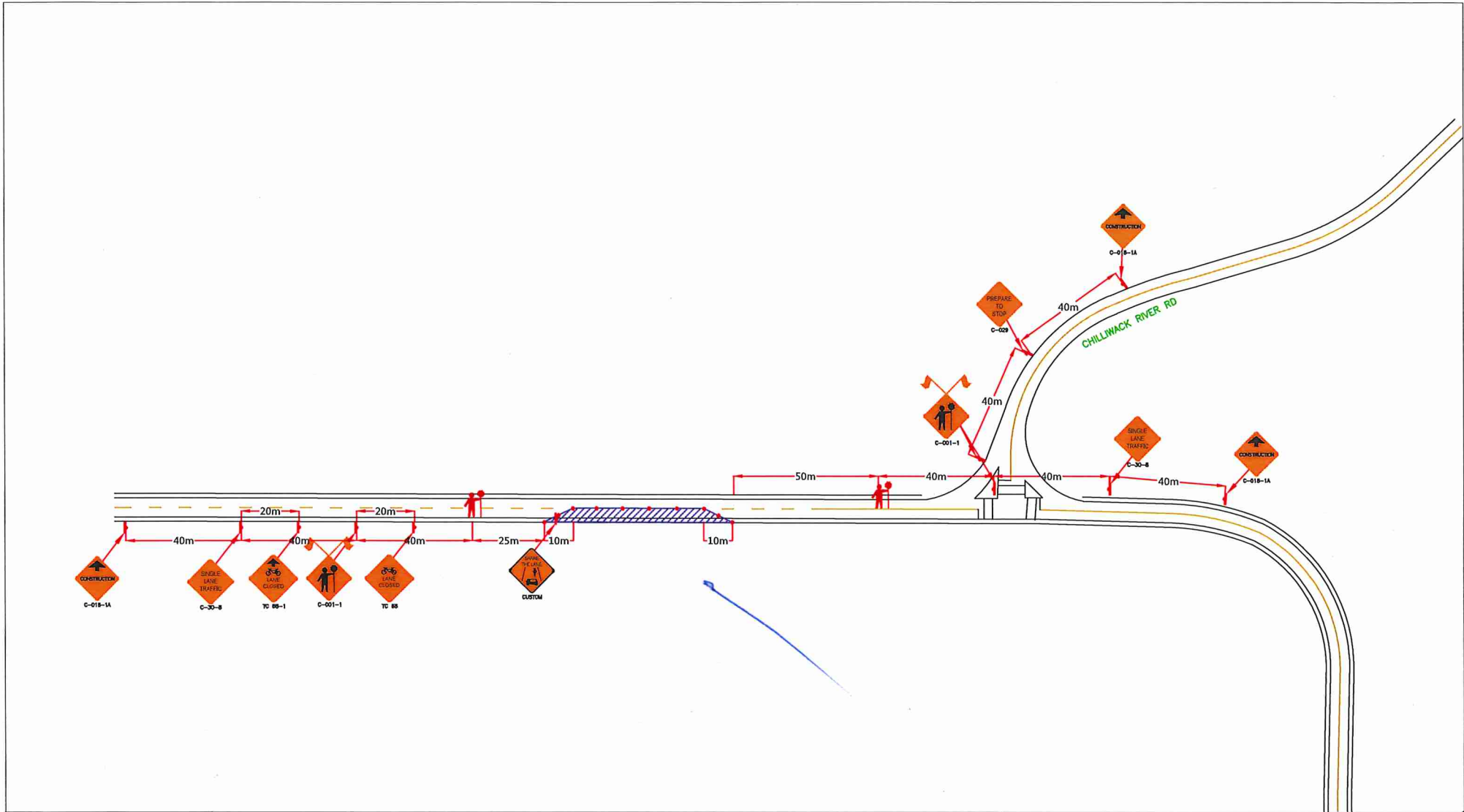
**BC HYDRO**

CHILLIWACK: PROMONTORY RD

Traffic Control Plan: Single Lane Alternating Closure

SCALE: NTS	DATE: 30.05.2018	VTS PROJ. NO. 16661	DWG. NO. DWG01	REV. BY: 00 SAS
---------------	---------------------	------------------------	-------------------	--------------------

U:\Working Traffic\Traffic Sign\Current Projects\16666



**LEGEND:**

	Sign Location		Delineator
	Close One Barricade		Traffic Control Person
	Closure Area		
	Access Route		
	Egress Route		

**VALLEY TRAFFIC SYSTEMS, INC.**  
 TRAFFIC MANAGEMENT DIVISION  
 1720 188A STREET  
 LANGLEY BC V1M 2Z7  
 PHONE: 604-913-2218  
 FAX: 604-913-2081

**REVISIONS:**

DATE	DETAILS

**NOTES:**

1. Dates: TBD
2. Hours of Operation: TBD
3. Duration: TBD
4. Traffic Plan based on a 50 km/h speed zone
5. TCPs to assist pedestrians and cyclists as required
6. Traffic specifications based on the MOT manual for work on Roadways (1999)

**MUNICIPAL PROJECT NO.**  
 T10

**MUNICIPAL CONTACT:**  
 TBD

**ONSITE CONTACT:**  
 Dawn Arnold  
 800-845-8900

**BUS STOP(S) TO BE REMOVED:**  
 N/A

**PARKING METERS TO BE REMOVED:**  
 N/A

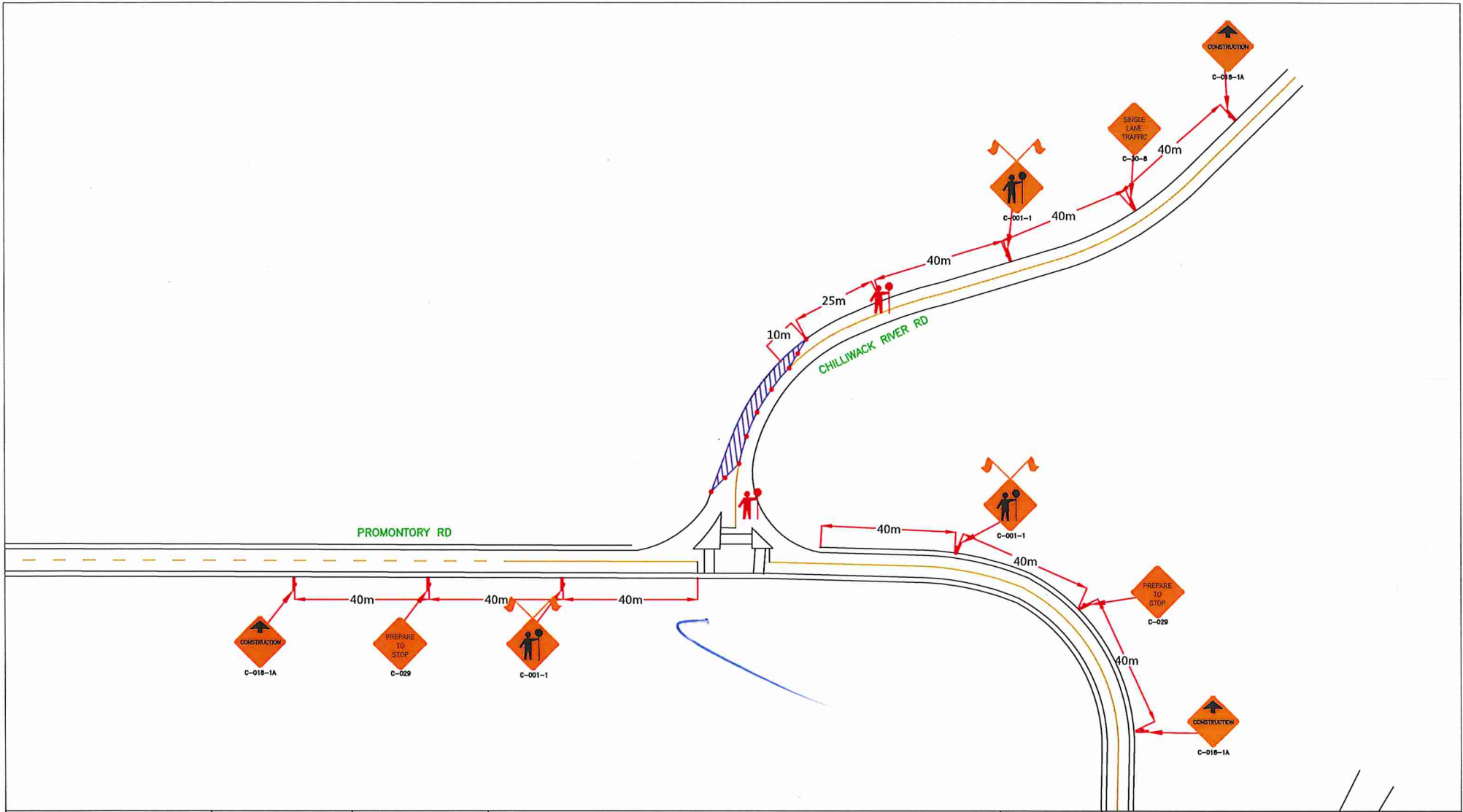
**BC HYDRO**

CHILLIWACK: PROMONTORY RD

Traffic Control Plan: Single Lane Alternating Closure

SCALE: NTS	DATE: 30.05.2018	VIS PROJ. NO. 16661	DWPL NO. DWG02	REV: 00	BY: SAS
------------	------------------	---------------------	----------------	---------	---------

**ENGINEER SEAL**



**LEGEND:**

	Sign Location		Delineator
	Close One Barricade		Traffic Control Person
	Closure Area		
	Access Route		
	Egress Route		

**VALLEY TRAFFIC SYSTEMS, INC.**  
 TRAFFIC MANAGEMENT DIVISION  
 1720 188A STREET  
 LANGLEY BC V1W 2Z7  
 PHONE: 604-913-2519  
 FAX: 604-913-3081

**REVISIONS:**

DATE	DETAILS

**NOTES:**

- Dates: TBD
- Hours of Operation: TBD
- Duration: TBD
- Traffic Plan based on a 50 km/h speed zone
- TCPs to assist pedestrians and cyclists as required
- Traffic specifications based on the MOT manual for work on Roadways (1999)

MUNICIPAL PROJECT NO. \_\_\_\_\_

MUNICIPAL CONTACT: \_\_\_\_\_

ON-SITE CONTACT: \_\_\_\_\_

PHONE: \_\_\_\_\_

BUS STOP(S) TO BE REMOVED: \_\_\_\_\_

PURCHASING METERS TO BE REMOVED: \_\_\_\_\_

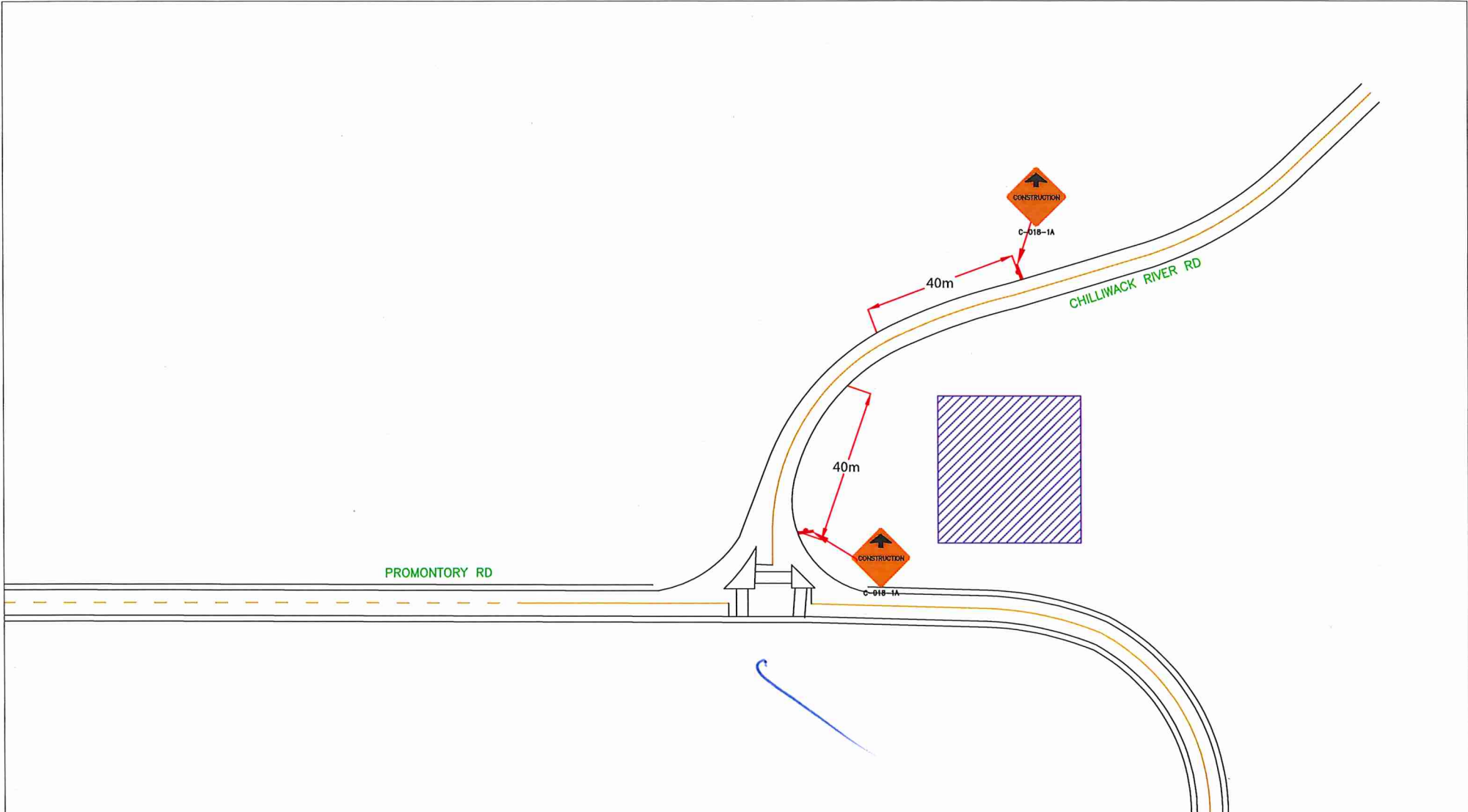
**BC HYDRO**

CHILLIWACK: CHILLIWACK RIVER RD

Traffic Control Plan: Single Lane Alternating Closure

SCALE: NTS	DATE: 30.05.2018	VIS PROJ. NO.: 16661	DWG. NO.: DWG03	REV: 00	BY: SAS
------------	------------------	----------------------	-----------------	---------	---------

BC\Valley Traffic\Traffic Mgmt\Current Projects\16661



**LEGEND:**

	Sign Location		Delimitator
	Close One Barricade		Traffic Control Person
	Closure Area		

**VALLEY TRAFFIC SYSTEMS, INC.**  
 TRAFFIC MANAGEMENT DIVISION  
 8770 196A STREET  
 LANGLEY BC V1M 2Z7  
 PHONE: 604-813-4210  
 FAX: 604-813-3681

**REVISIONS:**

DATE	DETAILS

**NOTES:**

1. Dates: TBD
2. Hours of Operation: TBD
3. Duration: TBD
4. Traffic Plan based on a 50 km/h speed zone
5. TCPs to assist pedestrians and cyclists as required
6. Traffic specifications based on the MOT manual for work on Roadways (1999)

MUNICIPAL PROJECT NO.

MUNICIPAL CONTACT:

ON-SITE CONTACT:

BUS STOPS TO BE REMOVED:

PARKING METERS TO BE REMOVED:

**BC HYDRO**

CHILLIWACK: CHILLIWACK RIVER RD

Traffic Control Plan: Shoulder Closure

SCALE: NTS	DATE: 30.05.2018	VTS PROJ. NO.: 16661	DWG. NO.: DWG04	REV: 00	BY: SAS
------------	------------------	----------------------	-----------------	---------	---------

\\valley-traffic\traffic\mgt\current\Projects\1600x